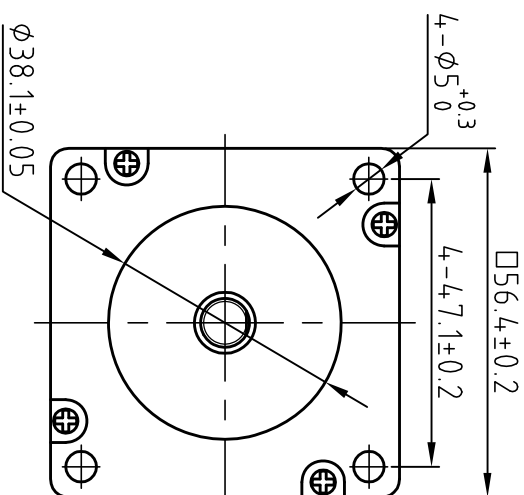
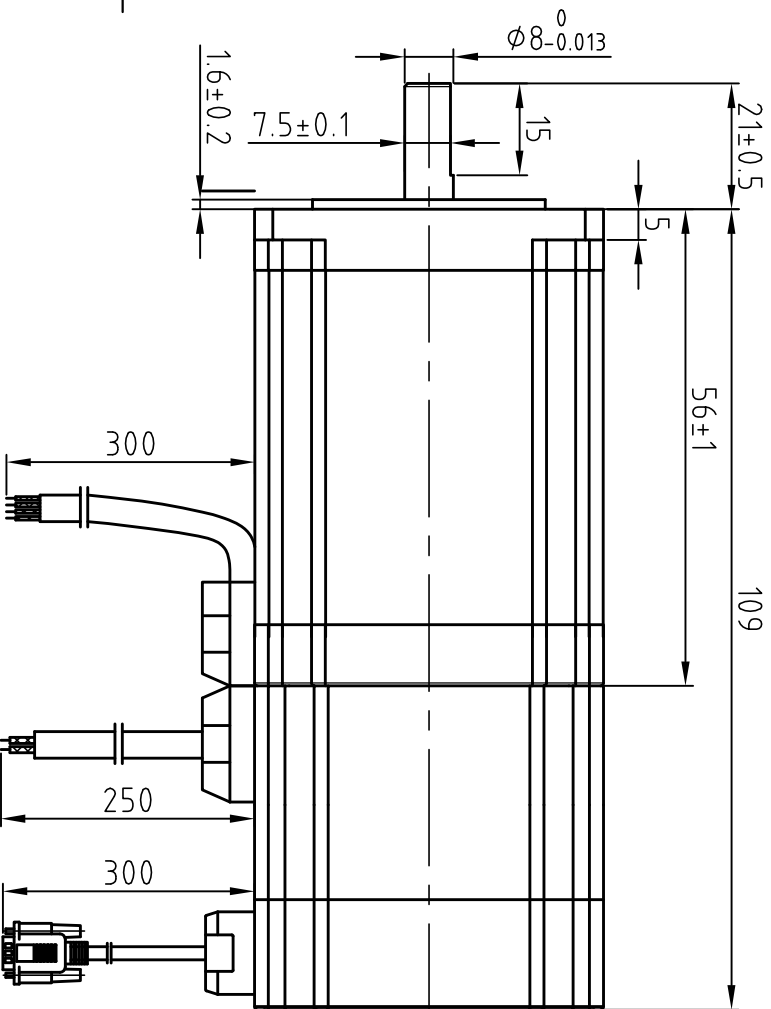
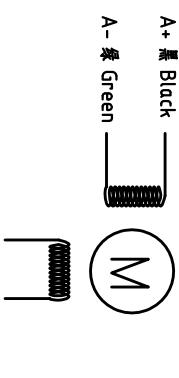


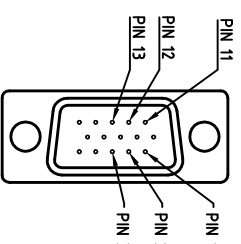
Dimension: (Unit: mm)



Motor Connctions:



Encoder Signals



Common Rating

Step angle	1.8°
Position accuracy	18±0.09°
Dielectric strength	500VAC 1min
Insulation resistance	100MΩhm(500VDC)
Insulation class	B
Temp rise(Max)	80K
Radial play	Max:0.02mm(Load 4.50g)
Axial play	Max:0.08mm(Load 900g)

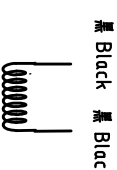
Motor Specification:

Current/phase	4.2 A
Voltage	168V
DC Resistance/phase ±10%	0.4 Ω
Inductance/phase ±20%	1.2 mH
Holding torque	1.1 N·M
Inertia	0.6 kg·cm ²
Weight	165 kg
Encoder Resolution	1000 cpr

Brake Specification:

Voltage	24Vdc
Friction torque	1N·M

Brake Connctions



PIN	1	2	3	11	12	13
颜色	黑	红	白	黄	绿	蓝
定义	A+	VCC	GND	B+	B-	A-

设计 Designed	王洪松	日期 Date	2017.7.7	材料 Material	深圳市雷赛智能控制股份有限公司 SHENZHEN LEADSHINE TECHNOLOGY CO., LTD.		
审核 Checked	秦军		2017.7.7	第一角画法 First Angle projection	带抱闸混合伺服电机		
批准 Approved	田天胜		2017.7.7	重量 Weight	比例 Scale	修改记录 Stage Mark	57HSM14-BZ-E1
图号 Part No.				共 1 页 第 1 页	Sheet 1 of 1	图号 DWG. NO.	LS-HSM57-02-0111-01